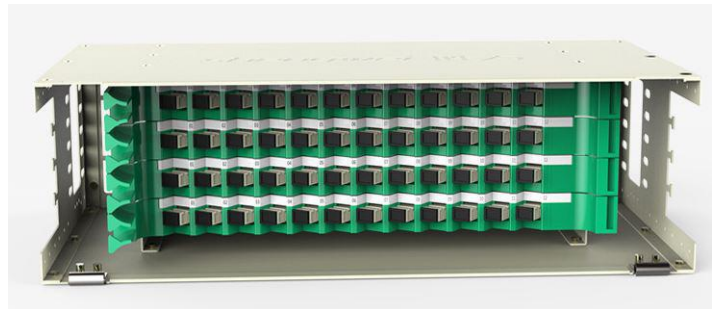
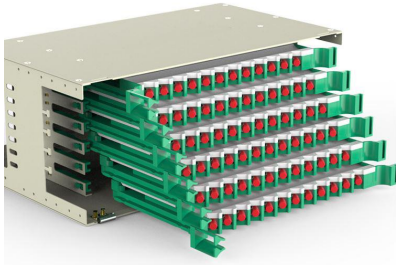


## Pull Out Type Optical Distribution Frame



### Description

Optical distribution frame (ODF) is used for connecting optical fiber and equipment of central office. 19" 1U~4U standard optical distribution frame can be installed on the desk or in the cabinet. It is mainly used in the telecommunication equipment room and network equipment room.

### General

- Operation temperature: -40~+60°C
- Relative humidity: ≤85% (temperature below 30°C)
- Atmosphere pressure: 70~106Kpa
- Insulating resistance: ≥2×104 MΩ / 500VDC
- Voltage-resistance strength: Under the effect of 15kv/DC/1min, non-puncture, and no arc-over
- Tray: 1~8pcs (tray with 12 cores).
- Accessories: insulation tape, nylon tie, labeling paper, fixer.

### Features

- With function of distribution and splicing
- 19 inch, 1U~5U standard installation,
- 1~8 trays, 12 ports per tray
- 2 cable fixer
- Adaptor FC,SC can be installed
- Suitable for ribbon and bunchy fiber cable
- Rack mount, wall mount.
- Suitable for simplex and duplex different adapter
- Easy to operate and convenient maintenance
- Metal material box

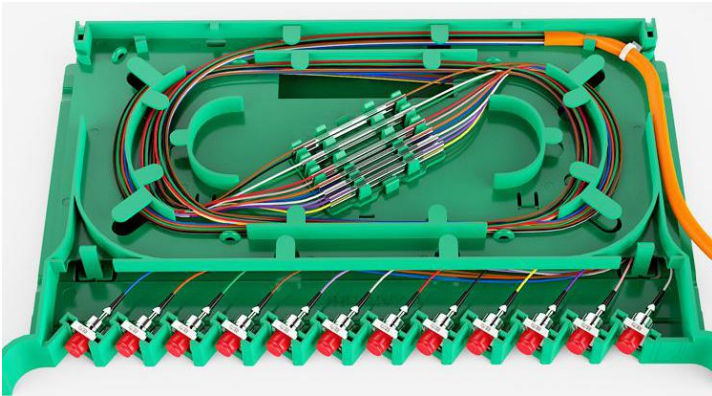
### Application

- FTTX (ODF rack)
- Optical fiber cabinet
- Optical fiber network
- Installation: desktop, wall mounting.

### Models

Model	Dimension	NumberofTray (12 cores)	Numberof Adaptor (FCorSC)
ODF-1U-12	19x265x75mm	1	12
ODF-1U-24	19x265x100mm	2	24
ODF-2U-36	19x265x125mm	3	36
ODF-3U-48	19x265x150mm	4	48
ODF-4U-72	19x265x175mm	6	72
ODF-5U-96	19x265x235mm	8	96

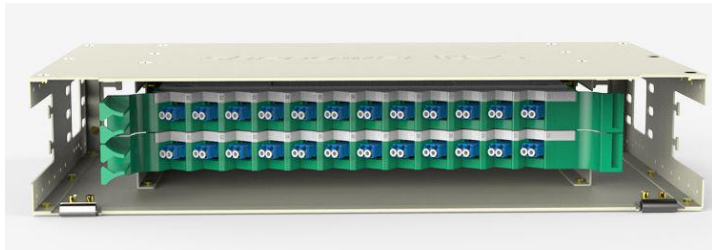
**Detail Pictures**



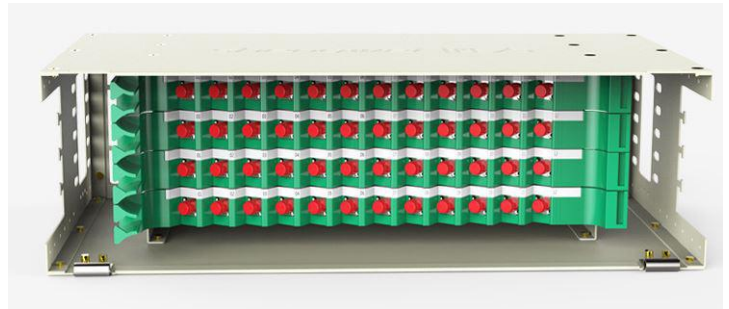
FC Connection details



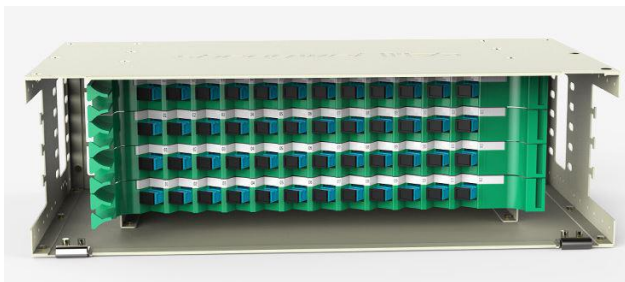
48 Core SC multi-mode Full Equipped



48 Core LC Single Mode Full Equipped



48 Core FC Full Equipped



48 Core SC Single Mode Full Equipped



48 Core LC Multi-mode Full Equipped