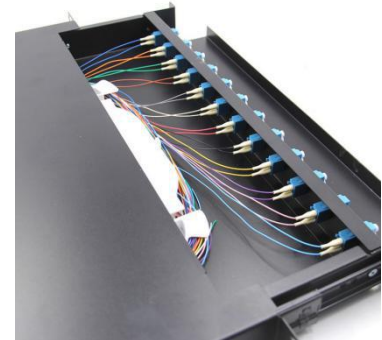
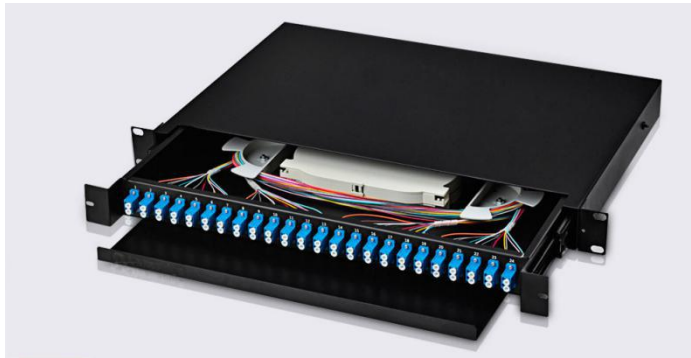


Sliding Drawer Type Optical Distribution Frame(ODF)



Description

Drawer fiber optical distribution frame is used for connecting optical fiber and equipment of central office. 19" standard distribution box can be installed in the cabinet. The drawer type is easy to operate. It is mainly used in the CATV, telecommunication equipment room and network equipment room.

General

- Operation temperature: -40~+60°C
- Relative humidity: ≤85% (temperature below 30°C)
- Atmosphere pressure: 70~106Kpa
- Insulating resistance: ≥2×10⁴ MΩ / 500VDC
- Voltage-resistance strength: Under the effect of 15kv/DC/1min, non-puncture, and no arc-over
- Accessories: insulation tape, nylon tie, labeling paper, fixer.
- Warranty: 2 years

Features

- With function of distribution and splicing
- 19 inch, 1U standard installation,
- Up to 24 SC/ST/FC Fibers or 48 LC fibers for 1U frame.
- Adaptor FC,SC,LC,ST can be installed, hybrid adapters and other type adapters upon customer request
- Suitable for ribbon and bunchy fiber cable
- Rack mount, wall mount.
- Suitable for simplex and duplex different adapter
- Sliding tray for easy assembly and operating
- Metal material box

Application

- FTTX (ODF rack)
- Optical fiber cabinet
- Optical fiber network
- Installation: desktop, wall mounting.

Specification

Fibre capacity	12 - 48	Cable port	2 + 2
Max. diameter of cable (mm)	22	Tray fibre capacity	12-24
Dimension (LxDxH)	487 × 236 × 44 mm	Colour	Black (RAL9004) or White
Material	Cold rolled steel	Weight	3.35 kg
Type of installation	Rack-mount 19"	IP Protection	IP20

Adapters options (Hybrid / Duplex / Other type of adapters upon requests)



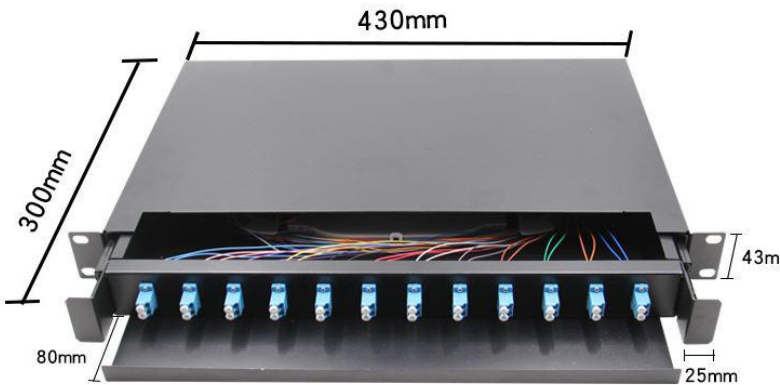
LC adapter

FC adapter

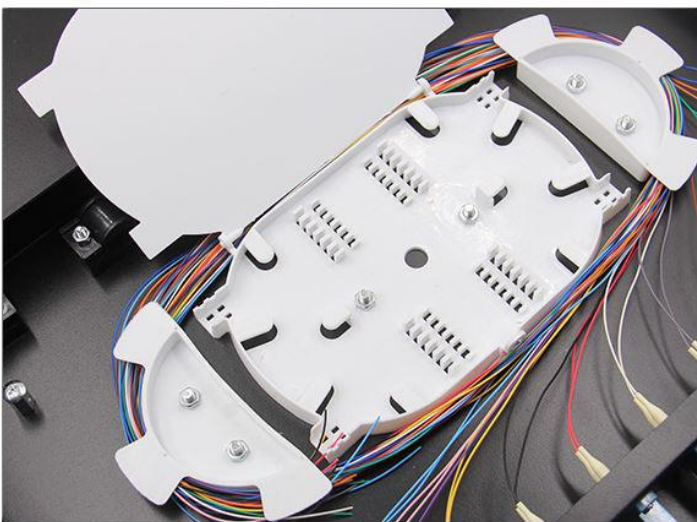
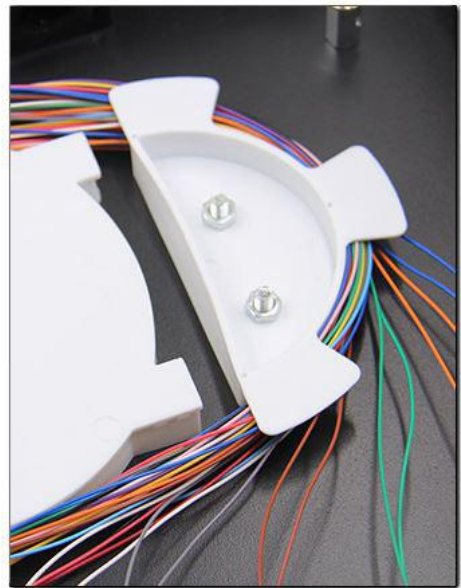
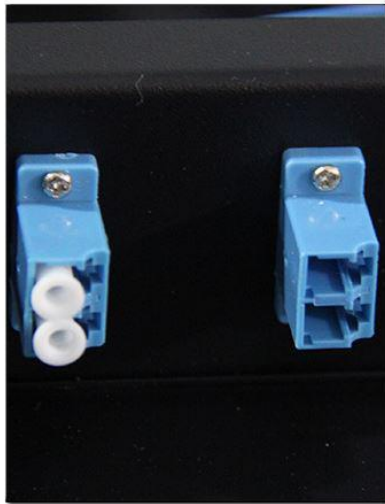
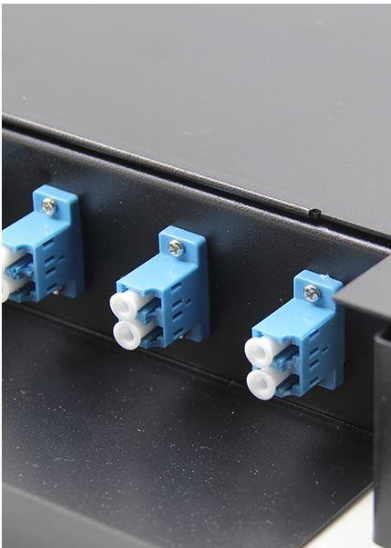
ST adapter

SC adapter

Packing and Dimension



Other Detail Pictures



Sliding Drawer Type Optical Distribution Frame(ODF)

